

EXCLUSIVELY AVAILABLE AT

HME HOME HEALTH



HME SIGNATURE SERIES LUNA MATTRESS

CREATED FOR COMFORT & DURABILITY

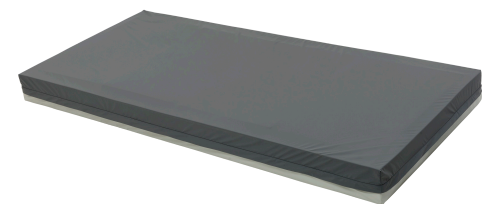


HME SIGNATURE SERIES LUNA MATTRESS



CREATED FOR COMFORT & DURABILITY

- 2.1 PCF density foam resulting in durability and support every night for users
- Density and firmness of foam provides resistance to bottoming out
- Created as a single solid foam mattress
- Emulsion cover: fluid-proof, non-allergenic, antibacterial, and antimicrobial
- Center line zipper with flap protects the mattress from fluids
- Designed and manufactured in Canada exclusively for HME Home Health
- Dimensions: 36" x 80"
- Weight Capacity: 300 lbs



CertiPUR-US

The HME Signature Series Luna Mattress is CertiPUR-US certified - safe for indoor use and free from harmful chemicals such as formaldehyde and ozone depleters.

