



HME

HOME HEALTH

MATTRESS GUIDE

CREATED FOR HEALTHCARE PROFESSIONALS

HME Home Health's Mattress Guide



For Healthcare Professionals

Our team of delivery, installation, and service specialists are trained caring professionals with extensive product knowledge and a sincere desire to deliver the comfort items you need. HME provides services for delivery, set up, and installation for all of the items we sell.

HME Home Health has a clear understanding of our responsibility in getting the right products to those in need as quickly and efficiently as possible. Our reputation for being a timely and trustworthy distributor has helped us to become BC's premier choice for mobility and home care products.

Therapeutic Support Surfaces Vs. Traditional Mattresses

Therapeutic Support Surfaces are specially designed to provide comfort, support, and reduce the risk of pressure injury development by redistributing the user's weight to reduce pressure points over high risk areas. The Therapeutic Surface is an integral part of the hospital bed and is designed to fit, bend, and move with the hospital bed.

What are Low Air Loss & Alternating Pressure Surfaces?

Low Air Loss (LAL):

Continuous air flow through or between the air cells control the surface temperature and humidity.

Alternating Pressure:

Achieved by the controlled inflation and deflation of air cells that line the mattress surface, alternating pressure therapy allows for vulnerable tissue that is under high pressure to be physically offloaded while continuously changing pressure points. The movement of the cells promotes blood flow (and oxygenation) into the tissues.

Low Air Loss Alternating Pressure Mattress Benefits:

Powered therapeutic surfaces combining Low Air Loss and Alternating pressure therapies reduce pressure from high-risk areas and actively control the microclimate to maintain skin integrity and promote wound healing.

Pressure Redistribution:

The ability of a support surface to distribute a load (the patient's weight) more evenly over the contact areas of the body to reduce pressure points over high risk bony areas.

Pressure Injury:

Breakdown of the skin and underlying tissues, primarily caused by prolonged pressure and tension against the skin. Risk factors for pressure injuries include the buildup of heat and moisture, friction and shear against the surface from sliding and bed movement, decreased bed mobility leading to constant pressure point, limited sensation reducing cues for movement, limited circulation and poor nutrition.

Selecting the Right Mattress



Pressure Injury Risk

The potential for an individual to develop skin breakdown. Risk Factors include pressure, friction, shearing, incontinence, lack of sensory perception and health factors related to nutritional status and medical conditions that affect blood flow (ex. Diabetes).

Low Risk: A mobile Individual, who has healthy, intact skin and adequate sensation to promote movement.

High Risk: An individual with limited mobility, who has a history of pressure injuries, and poor skin health.

Pressure Injury Stages

| | |
|---------|---|
| Stage 1 | Intact skin with prolonged redness over a localized area of pressure |
| Stage 2 | Shallow open ulcer or blister in the top two layers of the skin (epidermis) |
| Stage 3 | Full thickness tissue loss affecting the epidermis and the underlying tissues |
| Stage 4 | Full thickness tissue loss exposing the muscle, tendons, ligaments, and bone |

Areas of Consideration

| | | |
|-------------------------|---|----------------------------|
| Pressure Redistribution | Ability of the mattress surfaces to redistribute pressure off high-risk areas of the body through increasing surface contact, immersion, and envelopment. | 1 = Good 10 = Excellent |
| Firmness | How hard or soft the surface feels. Ability of the surface material to allow it to conform to body contours. | 1 = Soft 10 = Hard |
| Heat & Humidity | The surface material's ability to conduct heat away from the body and reduce the buildup of moisture. | 1 = Warm 10 = Cool |
| Transfers | Lateral stability of the surface to assists with transfers in/out of bed. | 1 = Difficult 10 = Easy |
| Bed Mobility | The ability of the surface's material to provide resistance against the weighted load on the surface promoting ease of movement. The higher the rating the easier it is for a person to roll and move in bed. | 1 = Poor 10 = Excellent |

Foam Surfaces

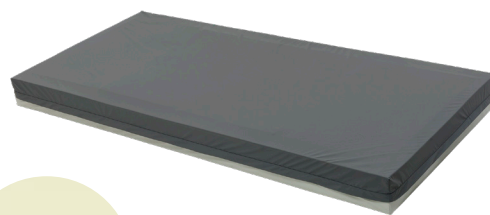


What is a Foam Surface (Hospital Mattress)?

Foam surfaces (used in hospitals, long-term care facilities, group homes or other therapeutic settings) are often constructed with multi-density layers and specified “immersion” zones. These mattresses are created to redistribute pressure, and assist in the management of skin issues and reduction of pressure injury. Foam surfaces require minimal setup and maintenance.

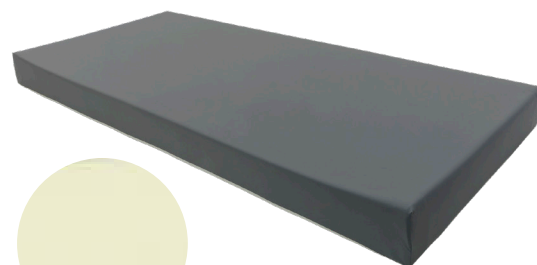
HME Signature Series Luna Mattress

- Designed as a single block of foam for users at lower risk of skin issues.
- The high-quality foam ensures durability and a consistent feel for ongoing comfort.
- The 4-way stretch premium mattress cover and center line zipper (with flap) offers fluid resistance, incontinence protection, breathability, infection control, and promotes immersion. It is machine washable and compatible with most disinfectant wipes.
- Weight Capacity: 300 lbs.
- Dimensions: 36" W x 80" L x 6" H



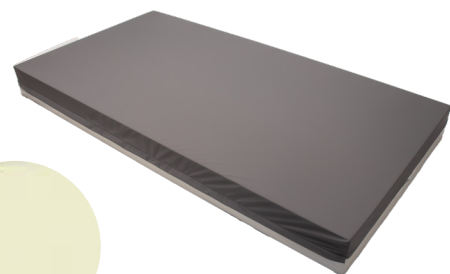
HME Signature Series Otter Mattress

- 3-Layer foam promotes contour and immersion for high-risk areas of the body.
- Full height transfer borders assist transfers and reduce the risk of entrapment.
- The 4-way stretch premium mattress cover and center line zipper (with flap) offers fluid resistance, incontinence protection, breathability, infection control, and promotes immersion. It is machine washable and compatible with most disinfectant wipes.
- Weight Capacity: 300 lbs.
- Dimensions: 36" W x 80" L x 6" H



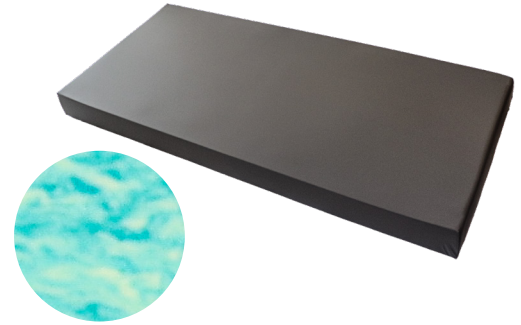
HME Signature Series Coho Mattress

- Single solid extra thick (7") monoblock of foam with extended useful life.
- Resilient material suitable to support weight of bariatric users.
- Unique variegated cells allowing for pressure redistribution and airflow.
- The 4-way stretch premium mattress cover and center line zipper (with flap) offers fluid resistance, incontinence protection, breathability, infection control, and promotes immersion. It is machine washable and compatible with most disinfectant wipes.
- Weight Capacity: 600 lbs.
- Dimensions: 42" W x 80" L x 7" H



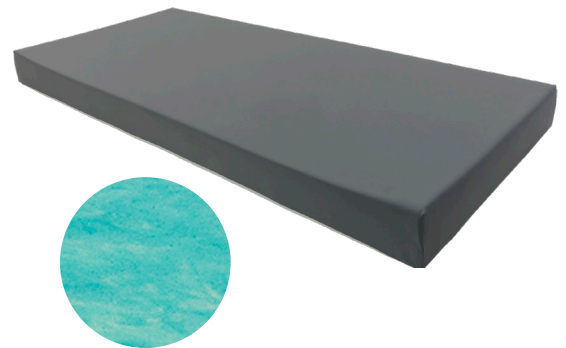
HME Signature Series Gel-E-Fish Mattress

- 3-Layer gel infused memory foam surface suitable for all care environments.
- Gel-infused memory foam promotes, optimal immersion, pressure redistribution, and heat dissipation.
- The 4-way stretch premium mattress cover and center line zipper (with flap) offers fluid resistance, incontinence protection, breathability, infection control, and promotes immersion. It is machine washable and compatible with most disinfectant wipes.
- Weight Capacity: 400 lbs.
- Dimensions: 36" W x 80" L x 6" H



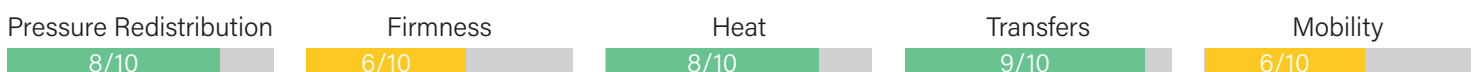
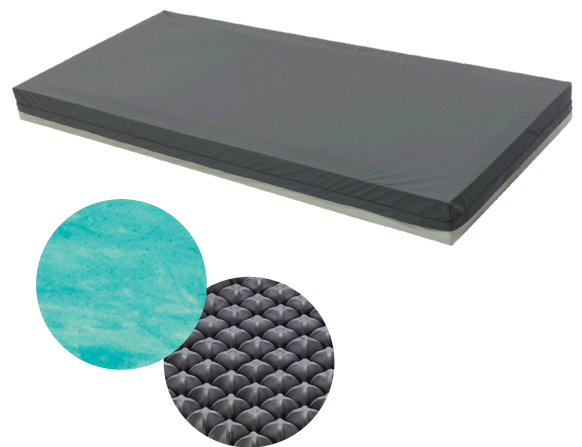
EMP LTC 4000 Ultra 55 Mattress

- Gel-infused, viscoelastic foam assists in temperature control.
- Fluid-resistant non-allergenic, antibacterial, and antimicrobial machine washable emulsion cover.
- The 4-way stretch premium mattress cover and center line zipper (with flap) offers fluid resistance, incontinence protection, breathability, infection control, and promotes immersion. It is machine washable and compatible with most disinfectant wipes.
- Transfer borders promote ease of transfers and reduce the risk of entrapment.
- Weight Capacity: 450 lbs.
- A 2" medium-plush viscoelastic foam topper promotes comfort and immersion.
- Dimensions: 80" L x 6" H x (width variety includes 35", 36", 39", 42", 48", 54", 59")



HME Signature Series LTC 9000 Mattress

- Adjustable Pressure Redistribution: With choice of a variety of foam insert choices, this versatile design allows for multiple configurations to meet specific and ongoing positioning and skin management needs.
- Gel-infused viscoelastic foam sections offer a cooling effect.
- Foam inserts can be replaced with air sections such as Roho® Dry Flotation sections for higher-risk users who require greater immersion and airflow.
- Firm transfer border provide a stable surface to assist with transfers.
- The 4-way stretch premium mattress cover and center line zipper (with flap) offers fluid resistance, incontinence protection, breathability, infection control, and promotes immersion. It is machine washable and compatible with most disinfectant wipes.
- Weight Capacity: 350 lbs.
- Dimensions: 35" W x 80" L x 6" H; 36" W x 80" L x 6" H; 39" W x 80" L x 6" H



Low Air Loss Alternating Pressure Mattress



What is a Low Air Loss Mattress?

Low air loss mattresses are specifically engineered to distribute the patient's body weight evenly across a large surface area, thereby mitigating the potential for skin breakdown. These mattresses are designed with a top surface that features numerous small, laser-made air holes through which air flows continuously. This creates a supportive cushion of air that envelops the user, reducing pressure on vulnerable skin areas.

True air loss mattresses are distinguished by their superior airflow capabilities, which are essential for maintaining optimal skin integrity. By ensuring a consistent and enhanced flow of air, these mattresses effectively regulate skin temperature and moisture levels. This controlled airflow helps prevent the buildup of heat and humidity that can contribute to skin irritation and breakdown. Thus, both low air loss and true air loss mattresses play critical roles in promoting patient comfort and preventing skin complications in clinical settings.

HME Signature Series Dove Mattress

- Designed to assist in the prevention and management of skin injuries, this surface offers alternating pressure and micro low air loss technologies
- This surface offers skin protection and comfort through its contoured cell design, 8" surface height reducing shear and friction. The static head section reduces disturbing sensations of movement.
- 'Quick-Start' feature ensures optimal set up and reduces ongoing maintenance, making this surface ideal for all patient care environments.
- Micro Low Air Loss: Continuous flow of air to maintain promotes reduction in temperature and humidity
- EasyCover: Cover easily removed for cleaning/disinfecting and can be laundered. Ease of cleaning ensures infection protection.
- Automatic Auto Fowler: Adds extra air to support the hips and lower back when the head of the bed is raised above 30 degree angle.
- Dimensions: 36" W x 80" L x 8" H
- Weight Capacity: 350 lbs.



| Pressure Redistribution | Firmness | Heat | Transfers | Mobility |
|-------------------------|------------|------|-----------|----------|
| 9/10 | ADJUSTABLE | 9/10 | 4/10 | 4/10 |

HME Signature Series Swan Mattress

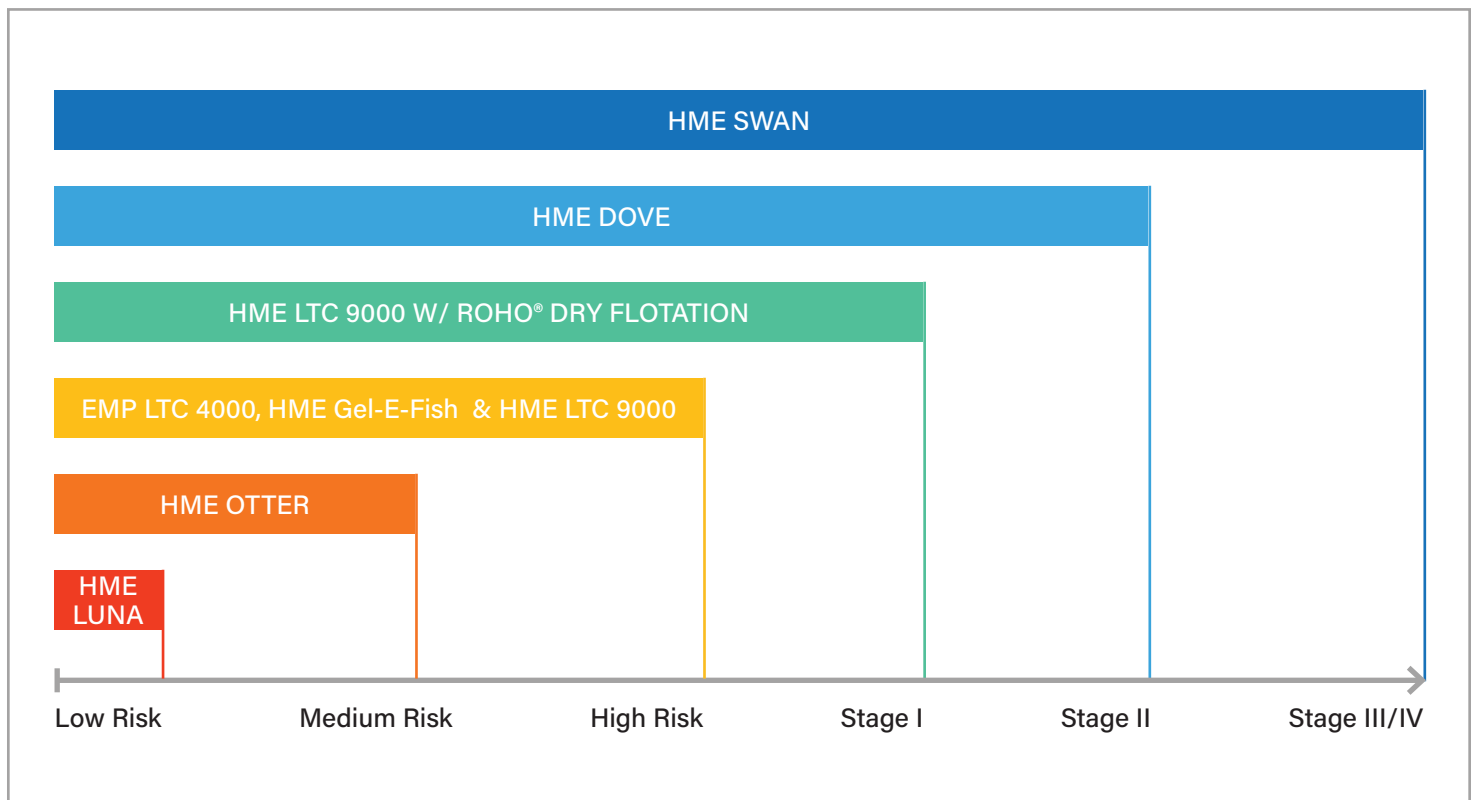
- True Low Air Loss Therapy: Continuous high airflow maintains an ideal microclimate for wound healing by regulating temperature and humidity.
- 1-in-3 air cells gently inflate and deflate to promote pressure relief and maintain stable body contact, minimizing peak pressures and surface movement.
- 'StaticPillow' – a motionless head section to promote head and neck positioning and offer comfort to the client.
- Auto-Detect: Automatically calibrates optimal pressure based on body weight and surface area and ensures optimal surface set-up
- Auto-Fowler: Automatic increase of air to sacral/pelvic area when bedhead is raised to reduce risk of bottoming-out and ensure protection for high-risk bony areas.
- HeelRelief – Cell height in the lower extremity area allow greater immersion of high risk ankle and heel areas to promote additional immersion and pressure redistribution.
- EasyCover design – cover easily removed for cleaning/disinfecting and can be laundered. Ease of cleaning ensures infection protection.
- Weight Capacity: 600 lbs.
- Dimensions: 36" W x 80" L x 8" H



| Pressure Redistribution | Firmness | Heat | Transfers | Mobility |
|-------------------------|------------|------|-----------|----------|
| 10/10 | ADJUSTABLE | 9/10 | 4/10 | 4/10 |



Comparison Based on Risk/Stage of Pressure Wounds





**PROUDLY SERVING
BRITISH COLUMBIA**

Canadian Owned & Operated

CONTACT US

Toll-Free: 1-844-821-0075

www.HMEBC.com

