

ELEVATING YOU UP.



Indoor & Outdoor Stairlifts
Vertical Platform Lifts

HME ACCESSIBILITY

LOWER MAINLAND & VANCOUVER ISLAND

HMESTAIRLIFTS.COM

About Our Company



HME ACCESSIBILITY



HME Accessibility is one of HME's largest divisions, which focuses on Stairlifts, Ramps, and VPLs. Our dedicated accessibility team has extraordinary product knowledge and experience to recommend the most appropriate high-quality products to meet your needs.

Our full-service approach works with you on all aspects of home accessibility. The process starts with an initial assessment to identify your needs and provide the best equipment options for you, followed by a high-quality product installation and on-going post-purchase customer service. HME supports you through every step of making your home more accessible.

As Bruno's largest and most experienced stairlift dealer in Western Canada, our team of expert Sales Consultants and Elevating Technicians can find the right solutions for you and your specific needs and can install custom-made products to fit your family's home and lifestyle. Our Accessibility team is devoted to servicing both the Lower Mainland and Vancouver Island communities. Contact our team for a free assessment today!



HME'S STORY

Canadian Owned & Operated

HealthLinc Medical Equipment Ltd. (HME®) began as a local medical equipment company, and during the past 30 years has grown to become one of the largest independent dealers of Mobility and Home Medical Equipment in BC. With over 80 staff operating out of over 45,000 s.f. in Richmond, Surrey, and Victoria, HME is a proud Canadian owned and operated local company.

HME is a recognized leader in stairlifts, vertical platform lifts, ramps, ceiling lifts, grab bars, and other installed products. HME has a certified accessibility team, who specialize in making clients homes accessible again. Through hmestairlifts.com, HME is the largest Bruno dealer in Canada and the recognized name in home stairlifts.

RICHMOND

(604) 821-0075

#130 - 4011 Viking Way
Richmond, BC V6V 2K9

SURREY

(604) 535-5768

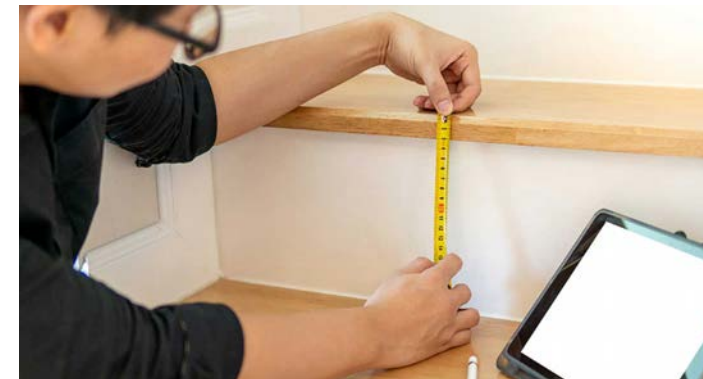
#104 - 3577 194th Street
Surrey, BC V3S 0L5

VICTORIA

(250) 386-0075

#101 - 2657 Wilfert Road
Victoria, BC V9B 5Z3

What We Do



01 FREE IN-HOME ASSESSMENT

At your convenience, one of our HME Stairlift specialists will meet with you at your home to evaluate both your home and accessibility needs to find the best stairlift option for you. We also have stairlift demos for you to try at all three of our showrooms for you to see in person and test out!



02 QUOTATION

Once your home is assessed and needs are addressed, our HME Stairlift specialist will provide you with a quotation and any necessary literature to ensure you have all of the information you may need when deciding on your stairlift purchase.



03 INSTALLATION

HME will work within your schedule to ensure your stairlift will be installed promptly. HME's internal technician team will take on every install to guarantee a proper install of your stairlift and to answer any additional questions you may have.



04 AFTERMARKET CARE

Once you make your investment in a stairlift, HME is here to help with warranty work as well as maintenance! With a team of 8 certified elevating technicians, HME works with you to ensure your that unit is well cared for and fully operating.

Straight Stairlifts: Elan



ELAN KEY FEATURES

Simple Operation: Control on armrest activates stairlift. Two wireless remote controls are also included.

Space Saving: Narrow vertical rail installs close to the wall to preserve maximum stairway space.

Sleek & Clean: Vertical rail with hidden gear rack gives a clean appearance and reduces exposure to dirt, grease.

Easy On/Off: Seat swivels up to 90 degrees at the top landing, extends and locks in place for safe exit away from steps.

Compact: Arms, seat, and footrest fold to save space.

Dependable: Battery-powered ensures performance even in a power outage. Stairlift continually charging along the entire rail.

Safe: Easy to use retractable seat belt. Obstruction safety sensors stop the lift when it bumps into an object.

ADDITIONAL OPTIONS

Manual/Power Folding Rail for narrow hallway or when doorway is at the bottom of stairs. Manual operation or push-button automatic.

Power Swivel Seat for effortless exit. Armrest switch control or wireless call/send.

Power Folding Footrest automatically flips up/down when the seat is raised/lowered. Arm switch control optional.

TECHNICAL SPECIFICATIONS

Weight capacity: 300 lb

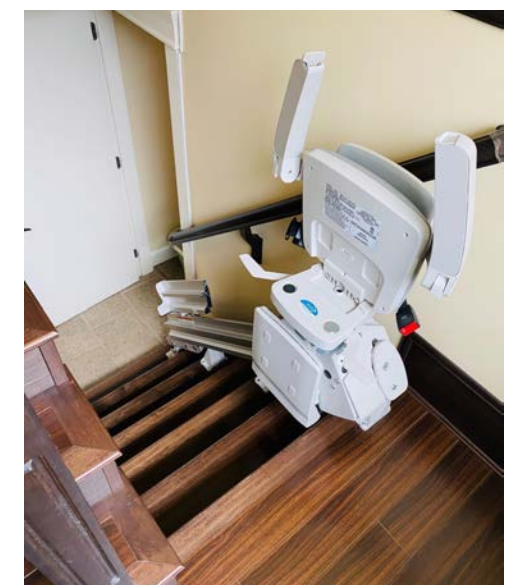
Width between arms: 20.25"

Seat pad: 15.75" long x 16.75" deep

Footrest: 10.5" long x 11" wide



Straight Stairlifts: Elan



Straight Stairlifts: Elite



ELITE KEY FEATURES

Luxury Styling: Plush, generous-size seat with multiple height adjustments, adjustable arm widths and footrest height for maximum comfort.

Simple Operation: Control on armrest activates stairlift. Two wireless remote controls are also included.

Space Saving: Narrow vertical rail installs close to the wall to preserve maximum stairway space.

Sleek & Clean: Vertical rail with hidden gear rack gives a clean appearance and reduces exposure to dirt, grease.

Easy On/Off: Seat swivels up to 90 degrees at the top landing, extends and locks in place for safe exit away from steps.

Compact: Arms, seat, and footrest fold to save space.

Dependable: Battery-powered ensures performance even in a power outage. Stairlift continually charging along the entire rail.

Safe: Easy to use retractable seat belt. Obstruction safety sensors stop the lift when it bumps into an object.

ADDITIONAL OPTIONS

Power Swivel Seat for effortless exit. Controlled on chair arm or wireless call/send.

Power Folding Footrest automatically flips up/down when the seat is raised/lowered.

Manual or Power Folding Rail for narrow hallway or when doorway is at the bottom of stairs.

Larger Seat and/or Footrest for increased comfort.

TECHNICAL SPECIFICATIONS

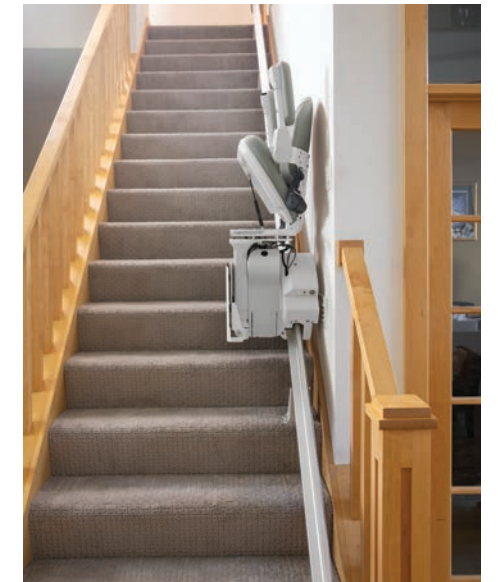
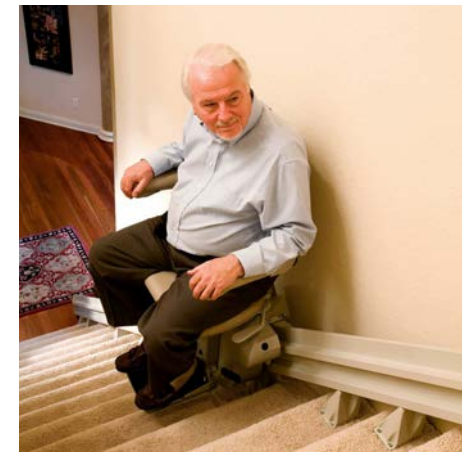
Weight capacity: 400 lb

Adjustable width between arms: 21.75"

	Standard Size	Larger Size
Seat pad:	17.5" W x 15" L	21.5" W x 16" L
Footrest:	9" W x 10" L	11" W x 12" L



Straight Stairlifts: Elite



Curved Stairlifts: Elite

ELITE KEY FEATURES

Luxury Styling: Plush, generous-size seat with multiple height adjustments, adjustable arm widths and footrest height for maximum comfort.

Custom Rail: Handmade rail for beautiful curves, precision fit and smooth ride. Covered gear rack gives a clean appearance and reduces exposure to dirt, grease.

Space Saving: Narrow vertical rail installs close to the wall to preserve maximum stairway space.

Easy Operation: High-performance ride. Armrest control activates stairlift. Two wireless remote controls also included.

Easy On/Off: Seat swivels up to 90 degrees at the top landing, extends and locks in place for safe exit away from steps.

Compact: Arms, seat, and footrest fold to save space.

Dependable: Battery-powered ensures performance even in a power outage. Stairlift continually charging along the entire rail.

Safe: Easy to use retractable seat belt. Obstruction safety sensors stop the lift when it bumps into an object.

ADDITIONAL OPTIONS

Power Swivel Seat for effortless exit. Controlled on chair arm or wireless call/send.

Power Folding Footrest automatically flips up/down when the seat is raised/lowered.

Mid-park & Charge Stations for staircases with middle landings.

Larger Seat and/or Footrest for increased comfort.

TECHNICAL SPECIFICATIONS

Weight capacity: 400 lb

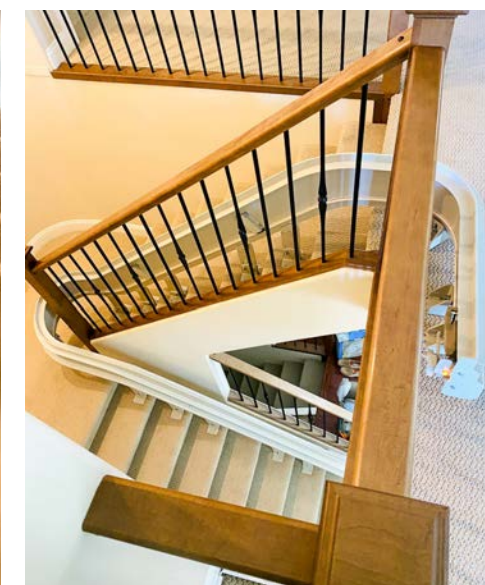
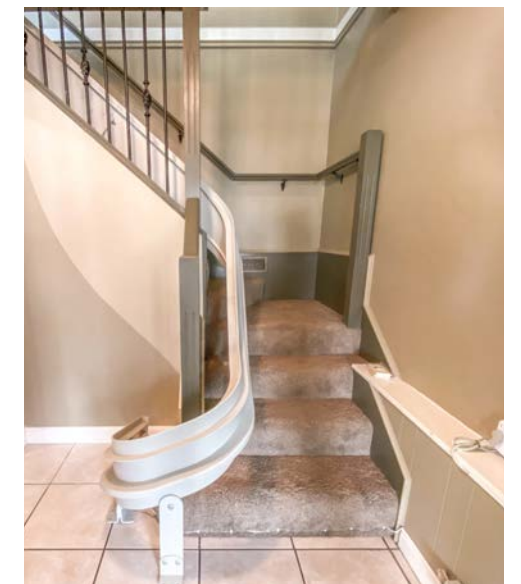
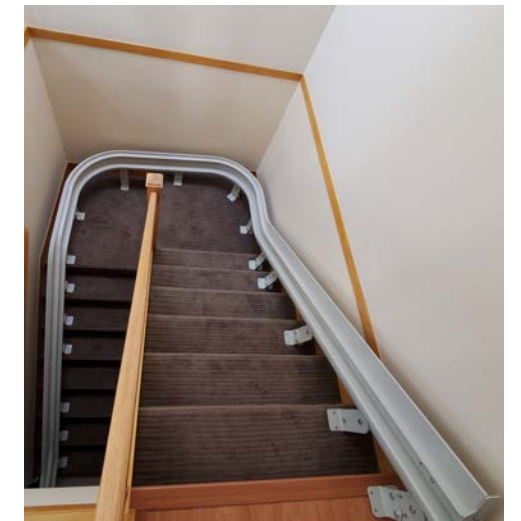
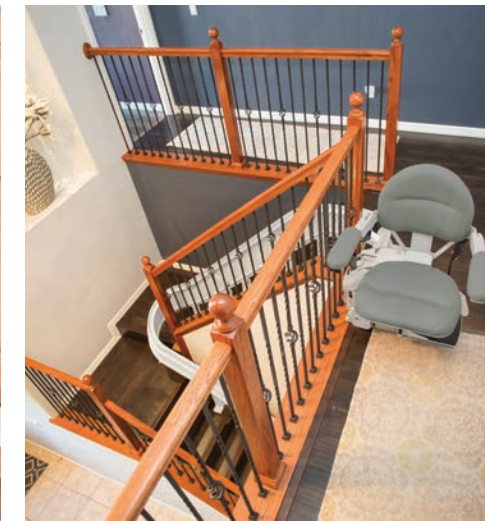
Adjustable width between arms: 21.75"

Installs within 7.5" of the wall

	Standard Size	Larger Size
Seat pad:	17.5" W x 15" L	21.5" W x 16" L
Footrest:	9" W x 10" L	11" W x 12" L



Curved Stairlifts: Elite



Outdoor Stairlifts: Elite



ELITE KEY FEATURES

The Bruno Elite Outdoor Stairlift is an outdoor stairlift with advanced features that are designed to withstand the most severe weather systems. These stairlifts include a built-in protective canopy that can be used when the unit isn't in use. The standard design of this product includes a two-coat painting system that will protect the rail and steel components from rain and snow. You can trust that the Elite Outdoor Stairlift can truly handle any weather system.

Performance tested for 0° F to 125° F (-18° C to 52° C)

Durable outdoor paint protects all steel surfaces

Marine-grade vinyl padded seat and armrests

Obstruction safety sensors, seat belt ensure safety

Two 12v batteries ensure dependable performance even in a power outage

Soft start/stop gives a smooth ride from start to finish

Generous seat size with multiple height adjustments

Onboard audio/visual diagnostics for easy service

Gold warranty: five-year major components; two-year parts

INCLUDED WITH SYSTEM

Footrest/Carriage Safety Sensors stop the unit when obstruction is encountered

Offset Swivel Seats makes getting on/off easy.

Flip Up Arms, Seat, and Footrest create plenty of extra space on steps.

Weather-Resistant Cover provides durable protection.

Two Wireless Call send controls.

TECHNICAL SPECIFICATIONS

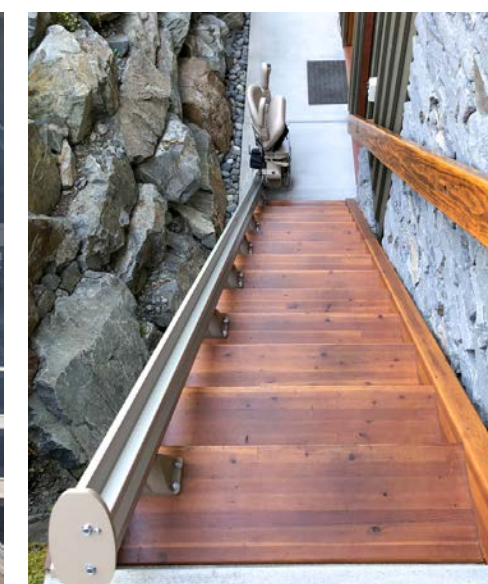
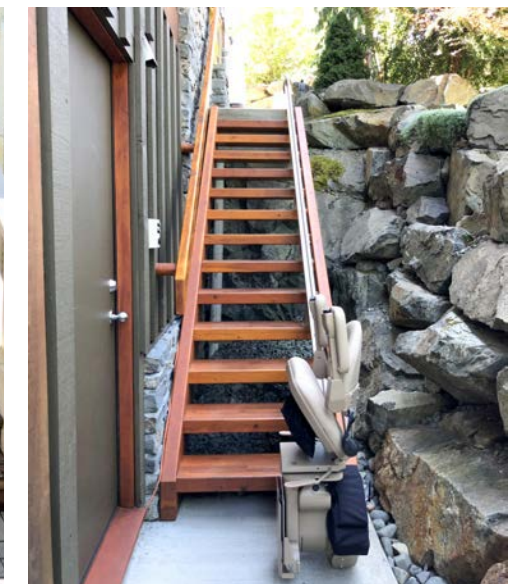
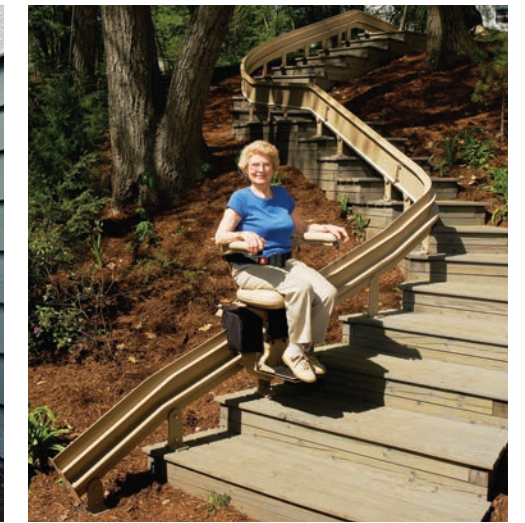
Weight capacity: 400 lb

Adjustable width between arms: 21.75"

	Standard Size	Larger Size
Seat pad:	17.5" W x 15" L	21.5" W x 16" L
Footrest:	9" W x 10" L	11" W x 12" L



Outdoor Stairlifts: Elite



Vertical Platform Lifts (VPL)



VPL FEATURES

The Bruno Vertical Platform Lift is a vertical elevator system that is typically installed on the outside of a home. A common configuration is to install the unit from the ground (i.e. patio area) to an upstairs deck. The Bruno vertical platform lift system allows users in wheelchairs, scooters, and another user to ride up together on the unit. This unit is preferred over an outdoor stairlift when a user is in a wheelchair.

Vertical platform units are large units, that weigh 1500 pounds. The team at HME will have the vertical platform unit through our logistics team delivered to the home. From there, it takes between 1-3 days (depending on the size of the unit as well as the features desired) to install within the home.

Typically, the unit sits on 4" of concrete, which the homeowner either has put in on their own, or HME has external concrete providers that can provide a quote. HME will do all the wiring/rail cutting (if required) to install the unit.

INCLUDED WITH SYSTEM

- Automatic self-lowering folding ramp
- Non-skid platform, ramp surfaces
- Weather-resistant unit coating and controls
- Emergency stop switch on the platform
- Spring-sensitive platform bottom stops unit if obstruction sensed
- Reliable DC battery power standard in units 10' and above
- Quiet, smooth ride

TECHNICAL SPECIFICATIONS

Weight capacity: 750 lb

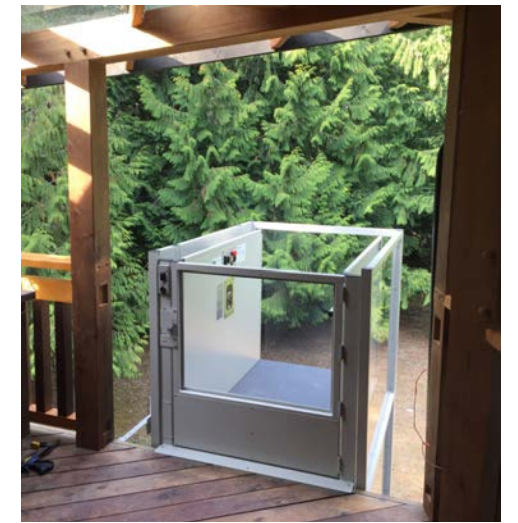
Platform size: 36" x 48", wall height 42" standard

RECOMMENDED CONTRACTORS

HME has built working relationships with several local contractors over the years and have been satisfied and impressed with their work. HME does not have general contractors on retainer, but we do have a list of contractors that we continue to support and typically recommend to our clients.



Vertical Platform Lifts (VPL)



Stairlift Rental Option: Elan

STAIRLIFT RENTAL PROGRAM

Unsure if a straight stairlift is right for your home? HME operates the largest straight stairlift rental program in British Columbia. HME offers a simple stairlift rental program with options to purchase your rental if you do decide a straight stairlift is what your home needs. This program is perfect for short term straight stairlift needs.



SETUP & INSTALLATION FEE

A onetime fee of \$475 is incurred at the beginning of the rental period for two of our trained and certified technicians to come to your home & measure for the system and install the product in your home. This total process typically takes less than 3 hours.

MONTHLY RENTAL FEE

The monthly rental fee for the stairlift rental program will be \$245 a month. The minimum rental term is 4 months. There is no maximum term.

REMOVAL FEE

If at the end of the rental period you wish to remove the stairlift, there is a removal fee of \$205 for Lower Mainland clients or \$175 for Vancouver Island clients to remove the stairlift from your home.

RENT-TO-OWN STAIRLIFT PROGRAM

Take advantage of the HME Rent-to-Own Program! Under this program, 100% of the first month's rent goes towards buying the equipment, and 50% of the subsequent three months goes toward the purchase (to a maximum of 4 months total credit). Delivery and installation fees are not credited. If interested in this program, please inquire with HME staff. The purchase price of the rental equipment will be provided by HME staff.

For all buy-out equipment, there is a warranty period of three months on parts from the date of the buy-out. Labour is not included.

Warranties



ANNUAL SERVICE CALL RECOMMENDED

For your stairlift to operate correctly, it is recommended to have one service call each year to check the motor, re-grease and check the rail and to ensure the system is functioning smoothly. Failure to have regular service calls every 12 months (which is kept in HME service log) may result in the manufacturer's warranty being voided.

Bruno Warranty Indoor Straight Stairlifts	Bruno Warranty Curved Stairlifts & Outdoor Stairlifts
<ul style="list-style-type: none"> ✔ Limited Lifetime Warranty on Major Components (Drive Train, Gearbox, Motor & Rail), 2 years on other moving parts. This does not include standard wear and tear on the product and is non-transferable. ✔ 6 Months Labour - After 6 months, labour fee will be charged for all visits.* ✔ 3 Months Battery Warranty 	<ul style="list-style-type: none"> ✔ Limited 5 Year Warranty on Major Components (Drive Train, Gearbox, Motor & Rail), 2 years on other moving parts. This does not include standard wear and tear on the product and is non-transferable. ✔ 6 Months Labour - After 6 months, labour fee will be charged for all visits.*+ ✔ 3 Months Battery Warranty
Bruno Warranty Vertical Platform Lifts	Savaria Stairlift Warranty All Models
<ul style="list-style-type: none"> ✔ Limited 2 Year Warranty on Major Components (Motor, Drive Nut, Pulleys, Belt) 1 Year Warranty on other moving parts. This does not include standard wear and tear on the product and is non-transferable. ✔ 6 Months Labour - After 6 months, labour fee will be charged for all visits.* ✔ 3 Months Battery Warranty 	<ul style="list-style-type: none"> ✔ 2 Year Limited Bumper to Bumper Warranty. This does not include standard wear and tear on the product and is non-transferable. ✔ 6 Months Labour - After 6 months, labour fee will be charged for all visits.* ✔ 3 Months Battery Warranty

HME Platinum Warranty: \$399

- ✔ This warranty extends labour coverage on all accessibility lift products to 2 years. (Service rate waived for 2 years)
- ✔ This also includes the first two yearly maintenance calls to recalibrate the systems - included free of charge.

*Labour Rates: Lower Mainland \$205/hour & Vancouver Island \$175/hour

RICHMOND

#130 - 4011 Viking Way
Richmond, BC V6V 2K9
Phone: (604) 821-0075
Fax: (604) 821-0049

SURREY

#104 - 3577 194th Street
Surrey, BC V3S 0L5
Phone: (604) 535-5768
Fax: (604) 542-0184

VICTORIA

#101 - 2657 Wilfert Road
Victoria, BC V9B 5Z3
Phone: (250) 386-0075
Fax: (250) 386-0049

FREE IN-HOME ASSESSMENTS



WWW.HMESTAIRLIFTS.COM